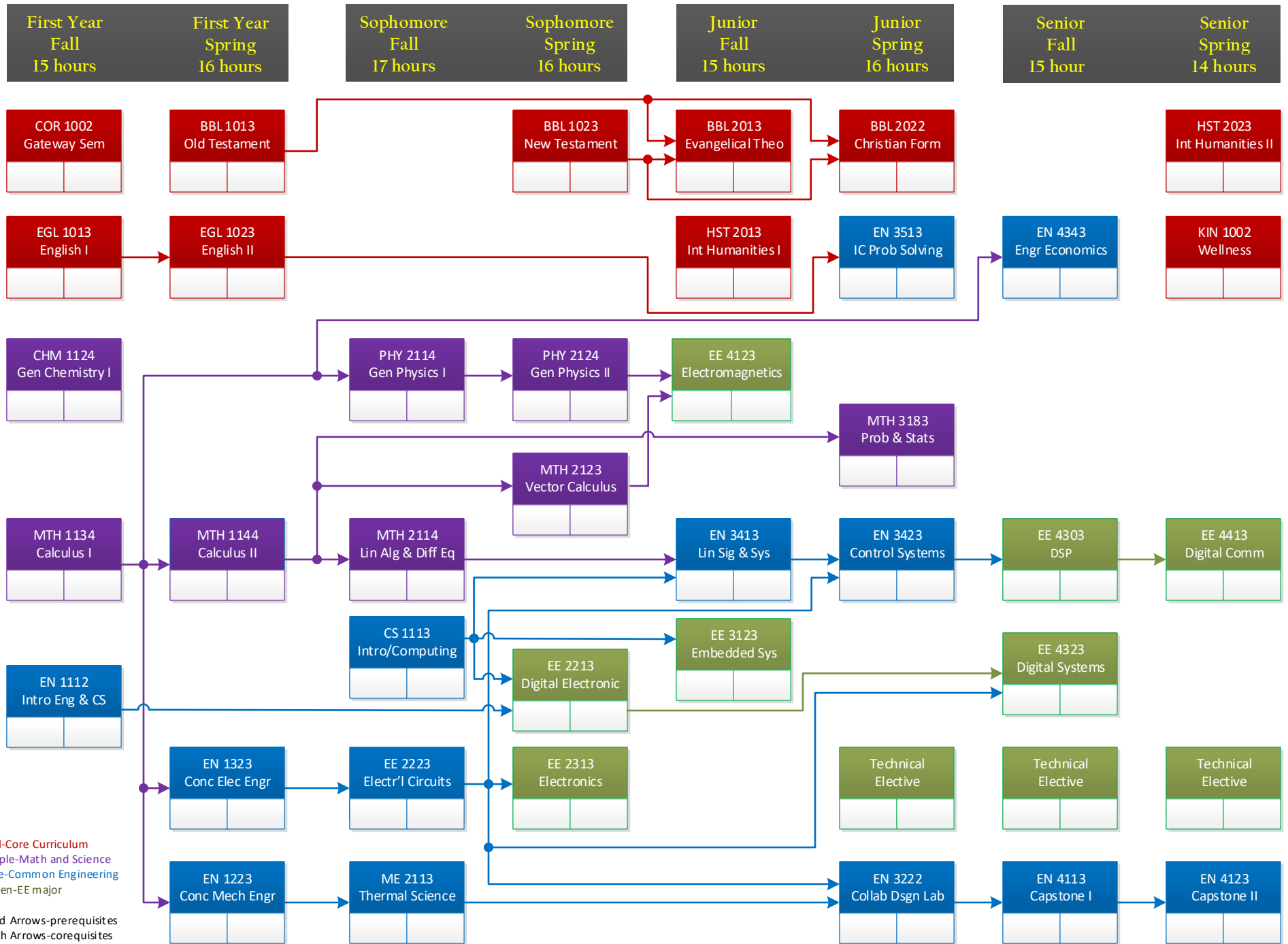


Bachelor of Science in Electrical Engineering



Key
 Red-Core Curriculum
 Purple-Math and Science
 Blue-Common Engineering
 Green-EE major

Solid Arrows-prerequisites
 Dash Arrows-corequisites
 Left Blank-Semester/Year Taken
 Right Blank-Grade Received

Engineering Practicums: EN 1121 (Production Techniques) and EN 1151 (Intro to PLCs), both offered every Fall; EN 1141 (Intro to CNC Machining) offered every Spring